

2022 – 2023 Millersville at Fall Creek Valley, Inc. Beautification Highlights



Learn more about Millersville at www.millersvillefcv.com

Millersville Fall Creek Overlook

- Located behind Walmart in the Millersville Preserve along the Fall Creek Trail
- Three large stone benches, open lawn area and wildflower gardens overlooking Fall Creek
- Interpretive and educational signage coming in 2023



Overlook site just before clearing

Nov, 2021



Overlook site close up - 2021



Spring, 2022

Overlook final clearing, leveling, seeding & stone bench placement







Overlook wildflower planting day volunteers

Spring, 2022







Beautiful!!!



Thanks to Millersville Board Member \$, ROW/Herbert Simon Family Foundation \$, DPW Land Stewardship, Indiana Wildlife Federation and Millersville volunteers!

New Millersville Fall Creek Overlook Interpretive Sign to be installed May, 2023

Thanks to ROW/Herbert Simon Family Foundation



FALL CREEK OVERLOOK

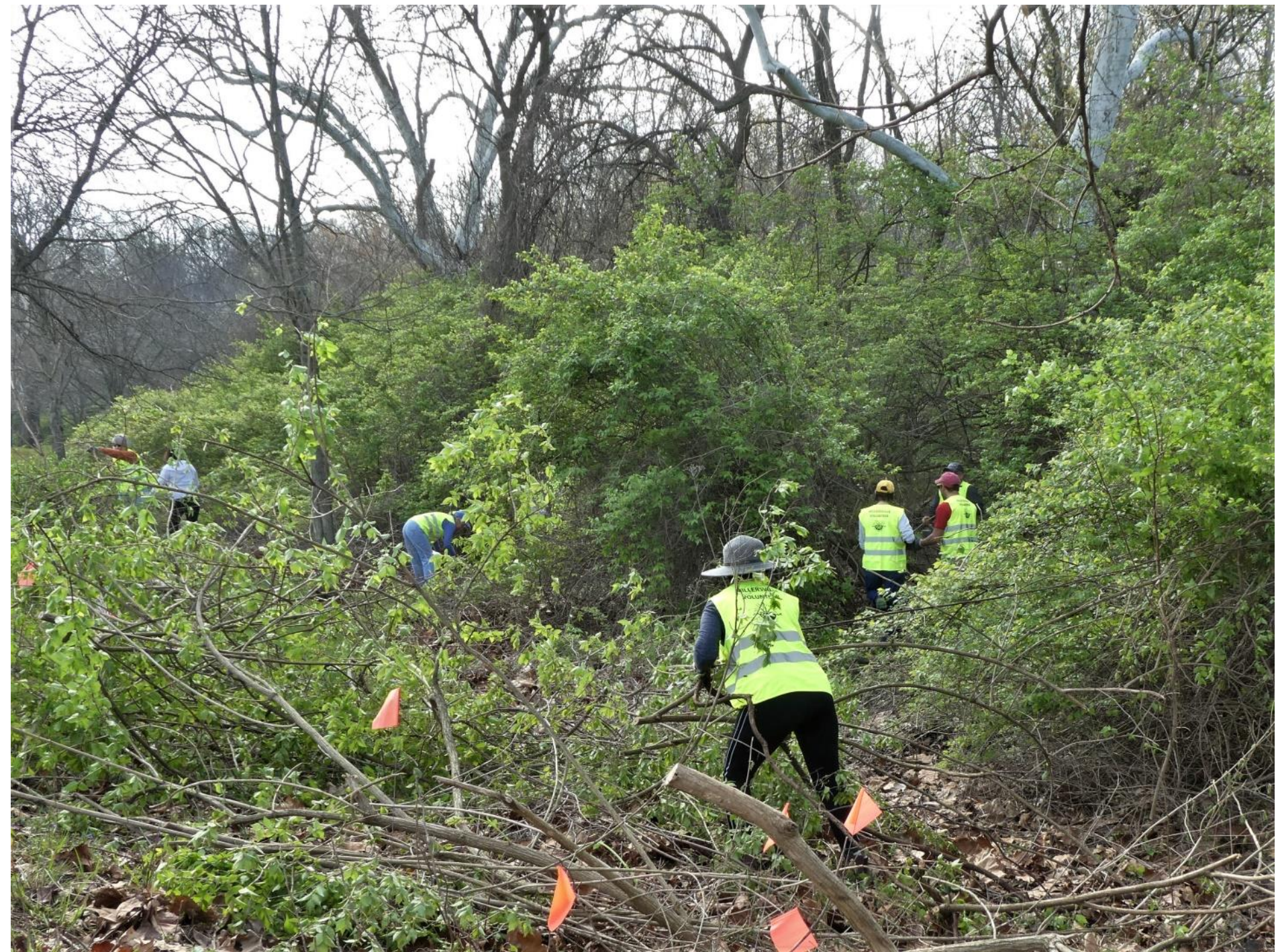
These flowing waters powered grist and saw mills, and development of the Millersville community, in the 1800s

To this day, the creek valley hosts wildlife,
native plants, and neighbors
who cherish its natural beauty.

-Before-

Invasive Porcelain Berry & Bush Honeysuckle removal along Fall Creek Trail
Millersville volunteers in partnership with Marion County Soil and Water Conservation, State
of Indiana Cooperative Invasive Management and Indy Land Stewardship







Incredible volunteers wrapping up the work day!



Seeding Day - Spring, 2022

Leaves and other debris removed

Grasses and wildflowers planted to prevent erosion and regrowth of invasives



Straw spread to prevent erosion and help with germination



2023 City of Indianapolis Neighborhoods Grant Program

- Millersville has been awarded \$8500!!!
 1. Overlook weed management, replacement perennial wildflowers and educational QR code plaques added to benches
 2. Revitalize Millersville Gateway Medians and Preserve
 3. Remove and control invasives - Emerson Way bridge at Fall Creek Parkway. Seed with grasses.

Project/grant approval/support from:

INRC – Indianapolis Neighborhood Resource Center; Indy DPW Land Stewardship; our Area 7 Mayor's Neighborhood Advocate; Hoosier Heartland Resource Conservation & Development Council, State of Indiana Cooperative Invasive Management, Keep Indianapolis Beautiful and Marion County Soil and Water Conservation District



Revitalize our Millersville gateway medians

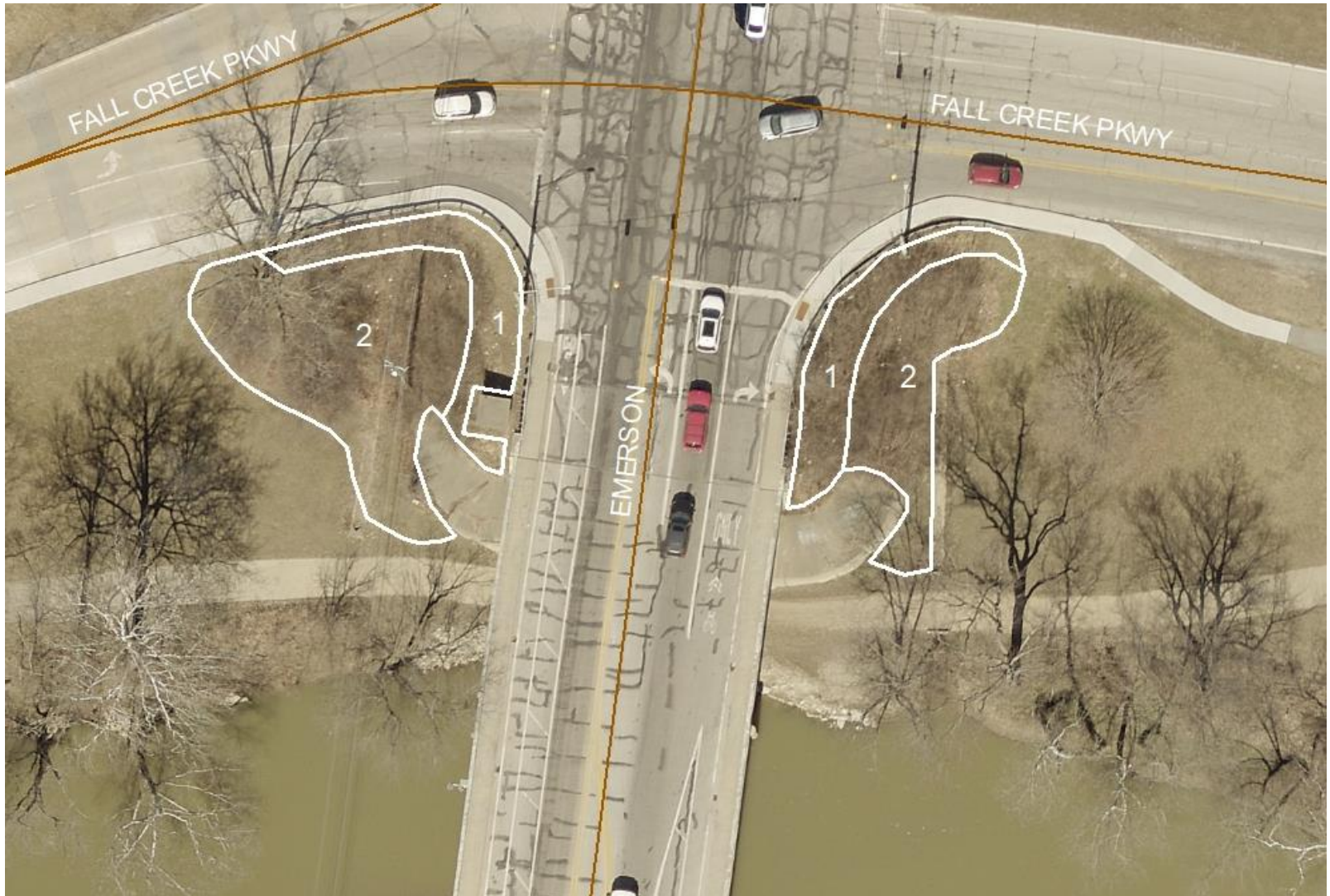


Revitalize our Millersville Preserve Sculpture Garden



Remove and control invasives

East and west sides of Emerson Way at Fall Creek Parkway



-Before-

Invasive Honeysuckle and Tree of Heaven blocking traffic site lines,
covering sidewalks over bridge and to Fall Creek Trail



East & west sides of Emerson at Fall Creek Parkway cleared by DPW

Next steps: remove debris, control invasive regrowth, plant grass



Fighting Litter

Quick-Hitter Litter Cleanup Leader

Phyllis Starks

